

Worksheet

Professional Version | US English

Belief-O-Meter



Description

An important part of CBT psychoeducation is that 'thoughts are not facts'. One job of the therapist is to help clients to understand that negative thoughts – although believable – are not always accurate. The *Belief-O-Meter* is an engaging way of helping children and adolescents to relate to their thoughts differently. It is a form of cognitive restructuring which encourages consideration of thoughts as an 'object' about which one can have an opinion. The *Belief-O-Meter* exercise:

- Helps to introduce the idea that thoughts are not facts.
- Introduces the idea of 'believability' of thoughts and that some thoughts may be more 'trustworthy' than others.
- Can be related to principles of distancing, decentering, cognitive defusion, continuum work, and mentalizing.
- Can be used to start a conversation about the consequences of holding certain beliefs.

Instructions

Suggested Question

Did you know that just having a thought does not mean that it is true, or that you have to believe it? Could you rate how much you believe some of the thoughts on this form? And what about some thoughts or ideas that have been bothering you recently – could you rate how much you believe those?

Encouraging curiosity at variation in believability

Could we start by recording some thoughts that have bothered you recently, and then have you rate them on the belief-o-meter? It can often be interesting to see what other people believe about these same thoughts. How could we find out how much other people believe these same thoughts? Is there any way we could survey your friends or family, or conduct an anonymous survey to find out what other people think? What would it mean if they thought the same way? What would it mean if they thought differently?

Examining whether emotions affect believability

Can you write down some thoughts from a time this week when you felt upset, and record some other thoughts from less emotional times in this past week. How believable were these thoughts at the time? What do you notice about the believability of these thoughts?

Exploring causes-for and changes-in belief

When did you start to believe this thought so strongly? What happened that you came to believe this? How and why has your belief in this changed over time?

Exploring the consequences of beliefs

What are the consequences of believing that so strongly? If you had a friend who didn't believe that so strongly how would they react in a similar situation?

Considering what it would take for a belief to change

What would it take for that belief to shift? If someone believed that, what new information would they need in order for that belief to shift?

References

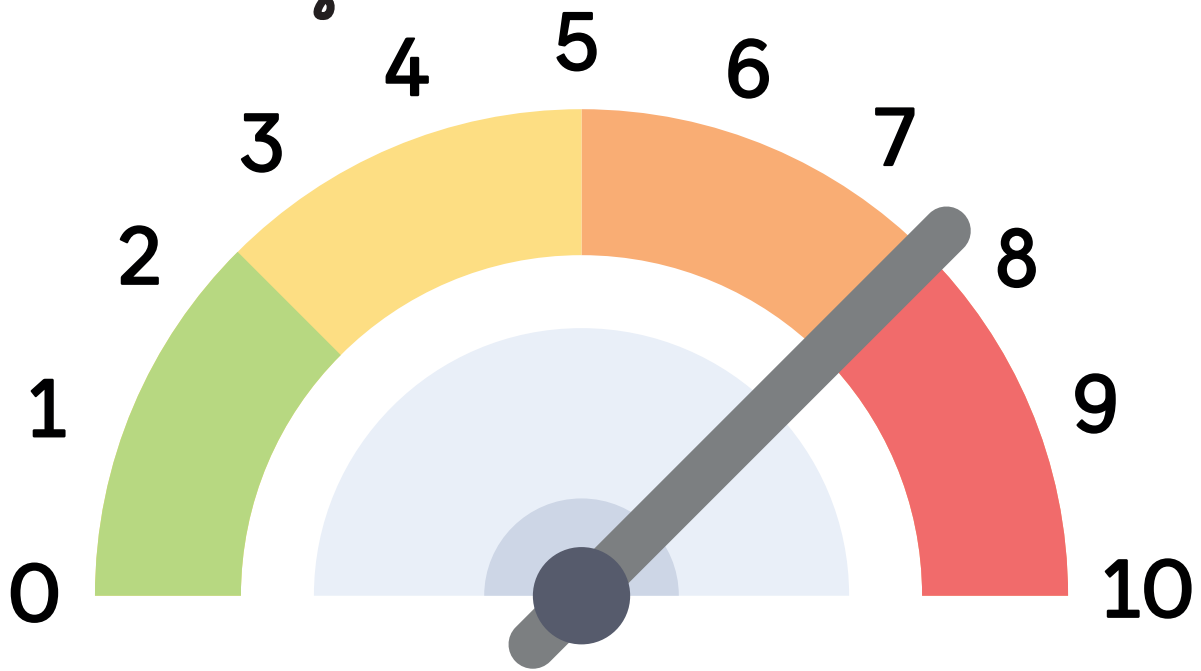
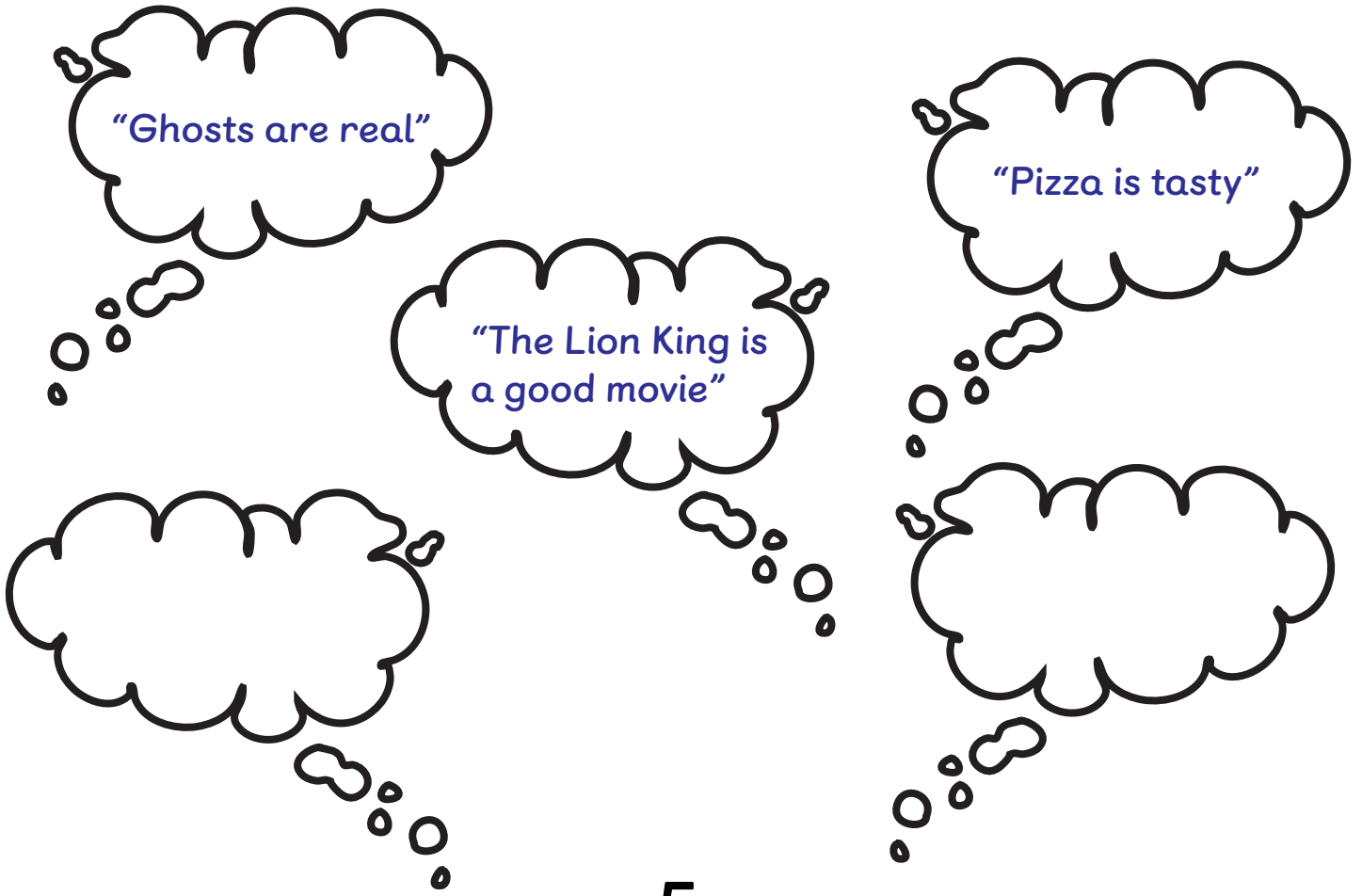
Beck, A.T., Rush, A.J., Shaw, B.F., & Emery, G. (1979). *Cognitive therapy of depression*. New York: Guilford.

Padesky, C. A. (1994). Schema change processes in cognitive therapy. *Clinical Psychology & Psychotherapy*, 1(5), 267-278.

Teasdale, J. D., Segal, Z. V., Williams, J. M. G., Ridgeway, V. A., Soulsby, J. M., & Lau, M. A. (2000). Prevention of relapse/recurrence in major depression by mindfulness-based cognitive therapy. *Journal of Consulting and Clinical Psychology*, 68(4), 615.

Belief-O-Meter

Just having a thought doesn't mean that it is true or that we have to believe it. Use the dial to rate how much you believe the thought in each bubble. Then use the dial to rate some of your own thoughts.

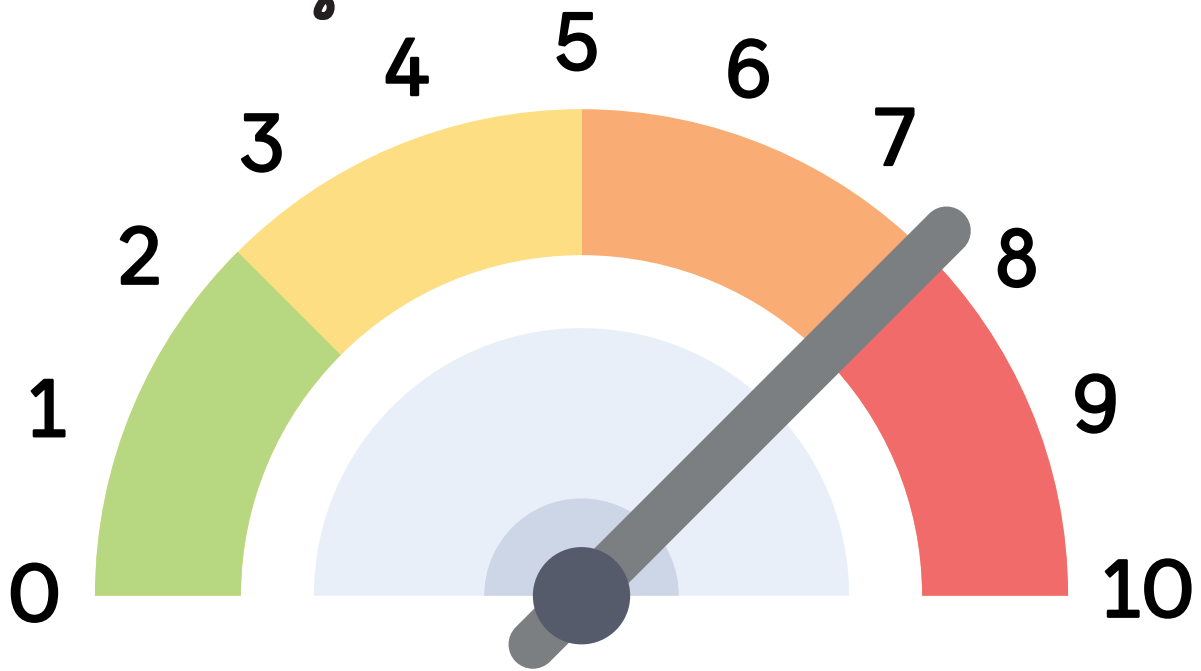
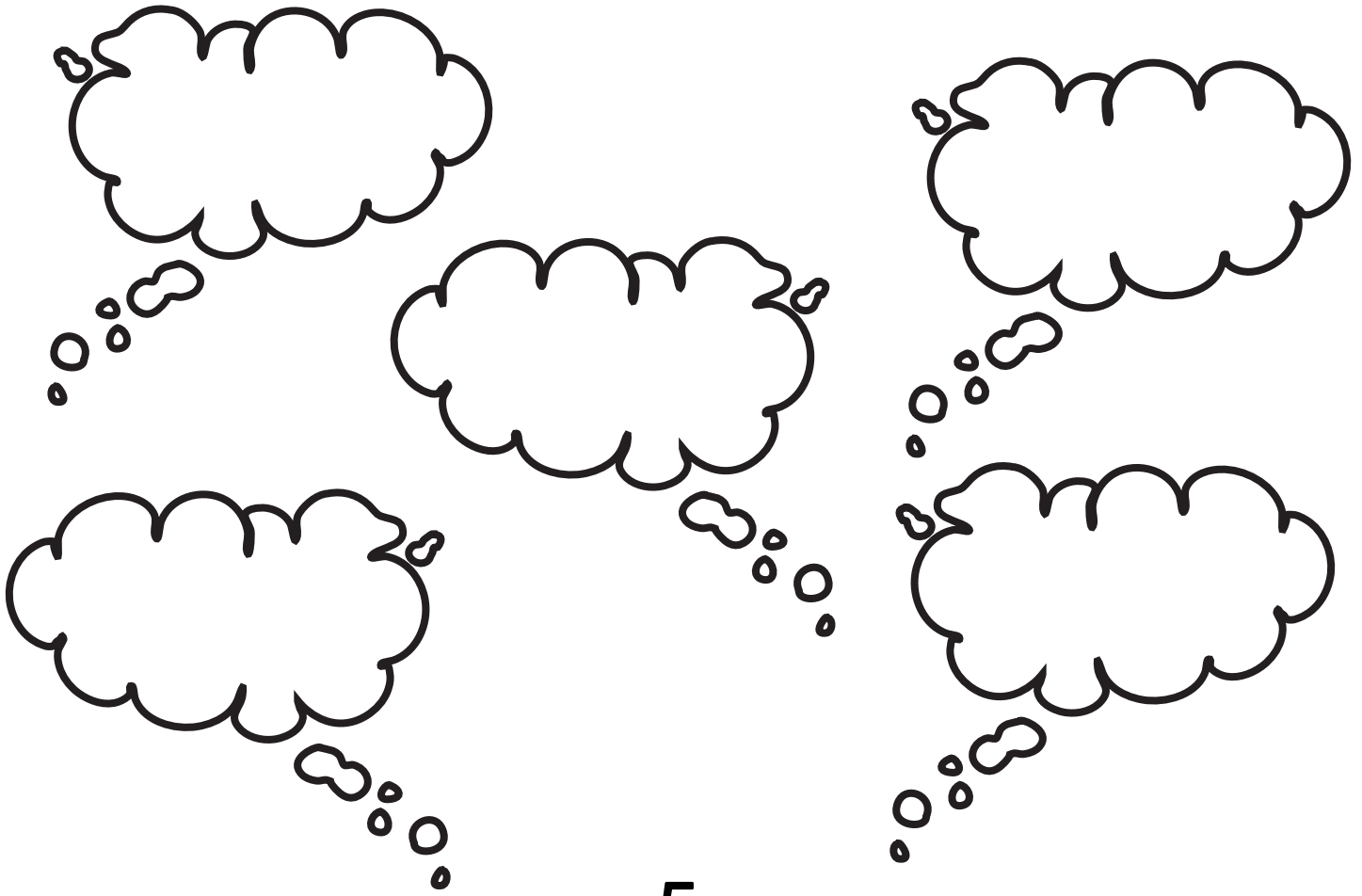


I don't believe this at all

I believe this completely

Belief-O-Meter

Just having a thought doesn't mean that it is true or that we have to believe it. Write some of your thoughts in the bubbles then use the dial to rate how much you believe each thought.



I don't believe this at all

I believe this completely

Psychology Tools develops and publishes evidence-based psychotherapy resources. We support mental health professionals to deliver effective therapy, whatever their theoretical orientation or level of experience.

Our digital library encompasses information handouts, worksheets, workbooks, exercises, guides, and audio skills-development resources.

Our tools are flexible enough to be used both in-session and between-session, and during all stages of assessment, formulation, and intervention. Written by highly qualified clinicians and academics, materials are available in digital and printable formats across a wide range of languages.



Resource details

Title: Belief-O-Meter (CYP)
 Type: Worksheet
 Language: English (US)
 Translated title: Belief-O-Meter (CYP)

URL: <https://www.psychologytools.com/resource/belief-o-meter-cyp/>
 Resource format: Professional
 Version: 20230721
 Last updated by: EB

Terms & conditions

This resource may be used by licensed members of Psychology Tools and their clients. Resources must be used in accordance with our terms and conditions which can be found at: <https://www.psychologytools.com/terms-and-conditions/>

Disclaimer

Your use of this resource is not intended to be, and should not be relied on, as a substitute for professional medical advice, diagnosis, or treatment. If you are suffering from any mental health issues we recommend that you seek formal medical advice before using these resources. We make no warranties that this information is correct, complete, reliable or suitable for any purpose. As a professional user, you should work within the bounds of your own competencies, using your own skill and knowledge, and therefore the resources should be used to support good practice, not to replace it.

Copyright

Unless otherwise stated, this resource is Copyright © 2023 Psychology Tools Limited. All rights reserved.